



Doctor Machine®
Model 152 SLT



Key Features

- Reversible winding
- Up to 20" (508mm) web width
- 3" (76.2 mm) and/or 6" (152.4 mm) pneumatic unwind and rewind shafts
- 1000 fpm (305 mpm) operation
- 200 lb. (90.7 kg) roll weight
- Automatic web guide
- Automatic tension control
- Splice table
- Touch screen control with a two-motor; AC Vector drive system
- Unwind and rewind diameters: 25" (635 mm)
- 0.1 PLI to 0.5 PLI / 0.175 to 0.875 N/cm (based on full web width)
- Razor or shear trimming
- Free web span available for roll inspection
- Air-operated rider rolls for density control
- Cantilvered unwind and rewind shafts

Doctor Machine®

Model 152 SLT

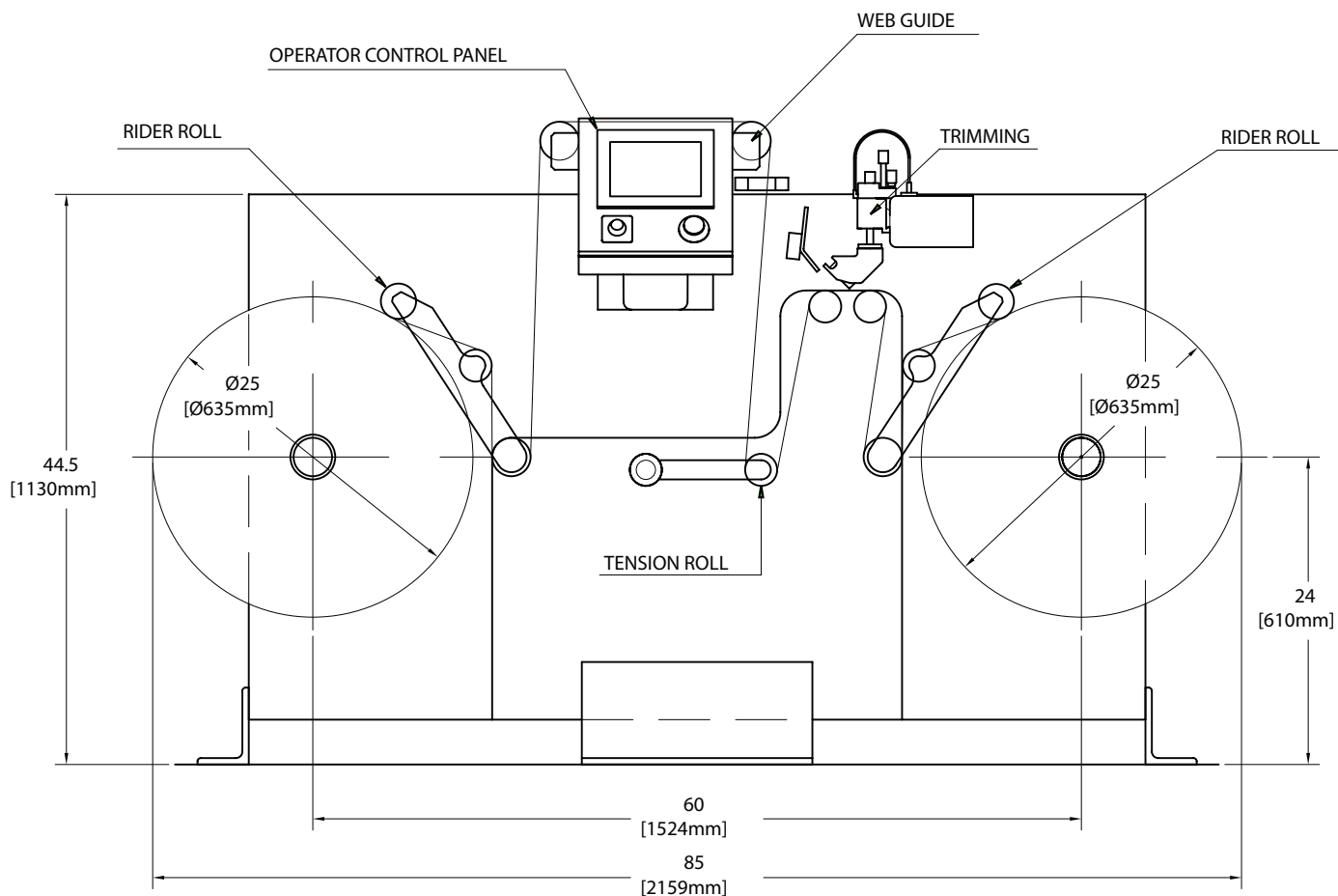
Designed specifically for the narrow-web market, the Model 152 SLT is capable of winding very light gauge, extensible film.

Available in a reversible model, this rewinder utilizes the latest in drive and control technology making it capable of a tension range from 0.1 - 0.5 PLI / 0.175 - 0.875 N/cm. The Model 152 SLT can be equipped with a range of label detection/inspection options capable of counting labels, identifying missing labels, and verifying all standard bar-code formats.

Accraply engineers the world's largest selection of Doctor Machines®, as well as a complete line of duplex differential slitter rewinders and shrink sleeve finishing equipment.



Stanford Sales Office
 1139 South Broadway
 Salem, IL 62881 USA
 +1 (618) 548-2600



Accraply, Inc.

A BARRY-WEHMILLER COMPANY

3580 Holly Lane North, Plymouth, MN 55447-1269 USA • +1 (763) 557-1313
 sales@accraply.com • www.accraply.com