



Doctor Machine®

Model 242/252 HC



Key Features

- Web Width 20 (508 mm), 30" (762 mm), 40" (1016 mm), 50" (1270 mm), 60" (1524 mm)
- 40" (1016 mm) or 50" (1270 mm) Diameter
- Lift-out shafts
- Reversible winding (Model 252HC)
- Touch Screen controls
- 2 PLI (3.503 N/cm) Maximum
- Two-motor AC Drive system (Model 252HC)
- Splice Table (Optional)
- Roll weights up to 4000 lb. (1814 Kg)
- 1500 fpm (457 mpm) operation
- Razor or Shear Trimming
- Rider Rolls at unwind and rewind (Model 252HC)
- Roll Lift Feature at unwind and rewind (optional)

Barry-Wehmiller

ACCRAPLY®

ACCRAPLY®

Stanford

Trine

Graham

Doctor Machine®

Model 242/252 HC

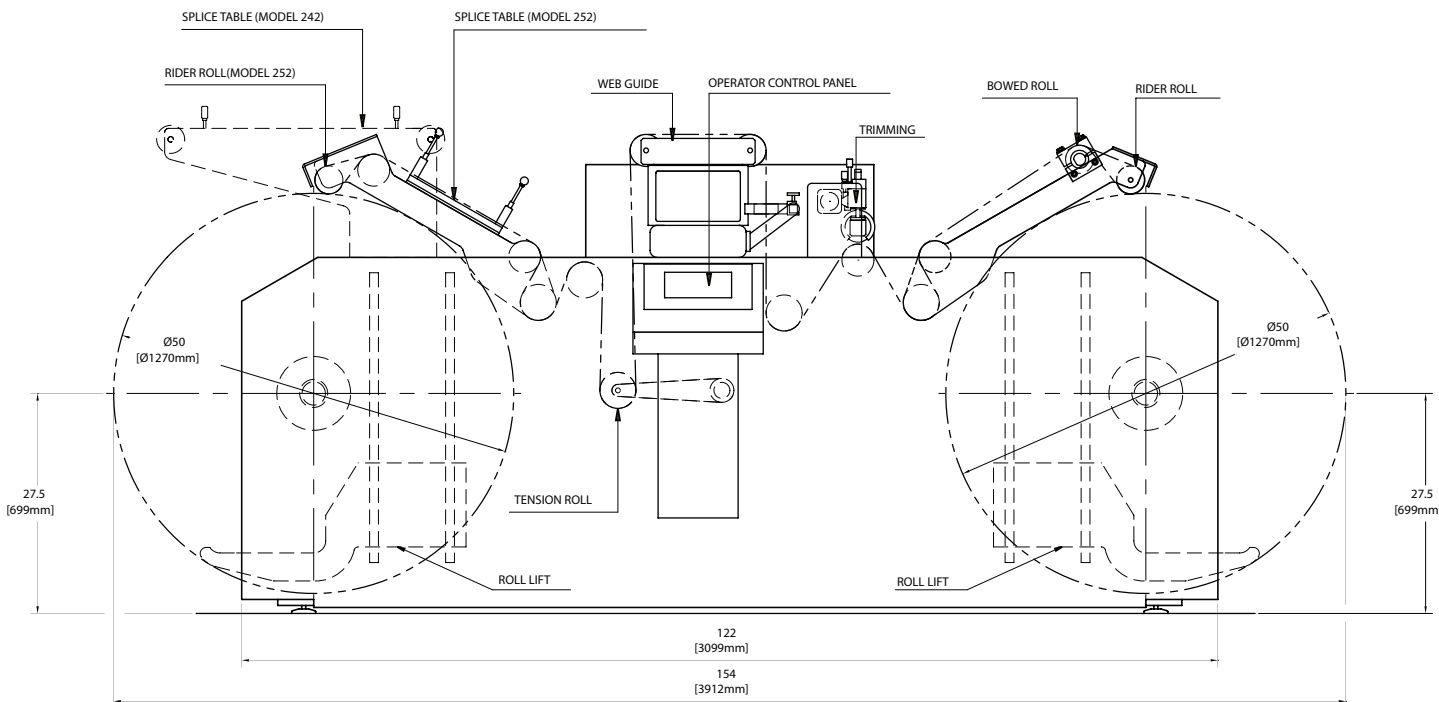
The Stanford Model 252HC provides an effective method of removing defective printing, repairing splices, re-tensioning and edge-guiding rolls of material. The 252HC will handle a wide range of materials including films, film-laminates, paper, business forms and pressure sensitive label stock.

A two-motor AC Vector drive system allows operation to 1500 fpm (457 mpm). The 252HC touch screen control panel defines user friendly and clearly displays all running parameters during operation.

Accraply engineers a large selection of Doctor Machines®, as well as a complete line of duplex differential slitter rewinders and shrink sleeve finishing equipment.



Stanford Sales Office
 1139 South Broadway
 Salem, IL 62881 USA
 +1 (618) 548-2600



Accraply, Inc.

A BARRY-WEHMILLER COMPANY

3580 Holly Lane North, Plymouth, MN 55447-1269 USA • +1 (763) 557-1313
 sales@accraply.com • www.accraply.com