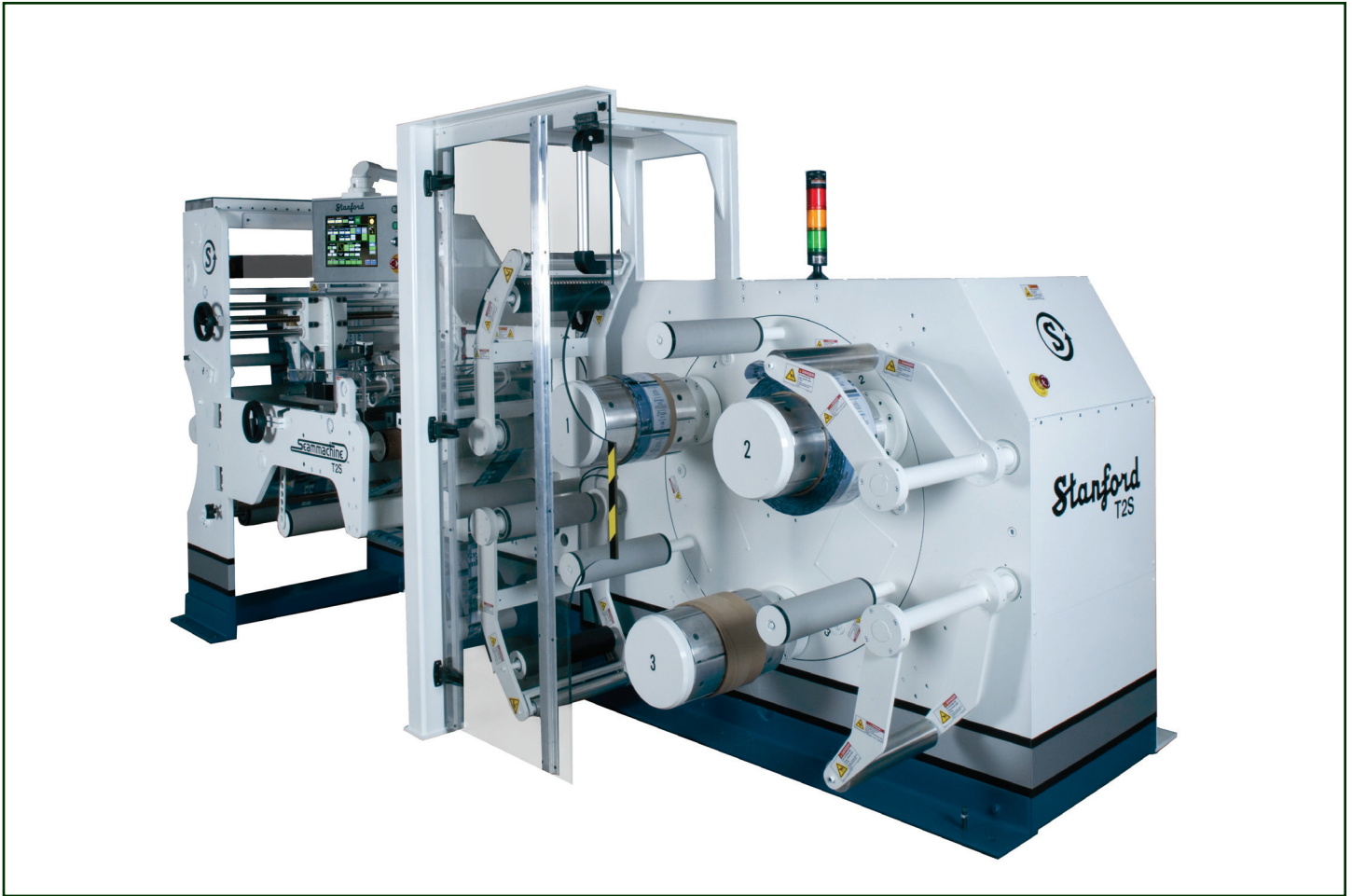




Turret Seammachine Model SM10-T2S



Key Features

- Three-position continuous operation turret rewind (various core sizes available)
- Sleeve width from 2" (50.8 mm) to 10" (254 mm); Sleeve widths less than 2" (50.8 mm) and greater than 10" (254 mm) available as an option
- Unwind roll diameter 30" (762 mm); Dual position and turret unwinds available as an option
- Rewind roll diameter 24" (610 mm)
- Unique solvent application system (patent-pending) allows for faster running speeds (up to 500 mpm) and minimal waste
- Patent-pending oscillation system facilitates faster speeds and robust rolls
- New nip roll system eliminates crushed edges
- Will form and seal PVC, PET, PETG, OPS and PLA

Barry-Wehmiller

ACCRAPLY

ACCRAPLY

Stanford

Trine

Graham

Turret Seammachine

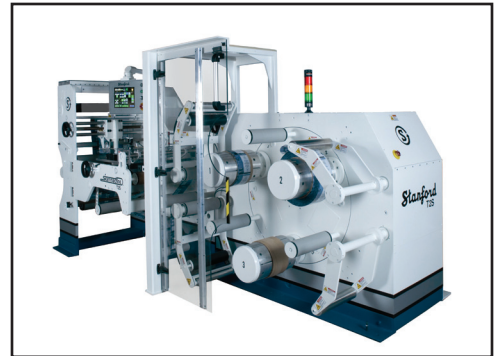
Model SM10-T2S

Accraply continues to innovate its line of Stanford shrink sleeve equipment with the addition of continuous operation seaming equipment. Customers can choose the level of automation which best fits their requirements.

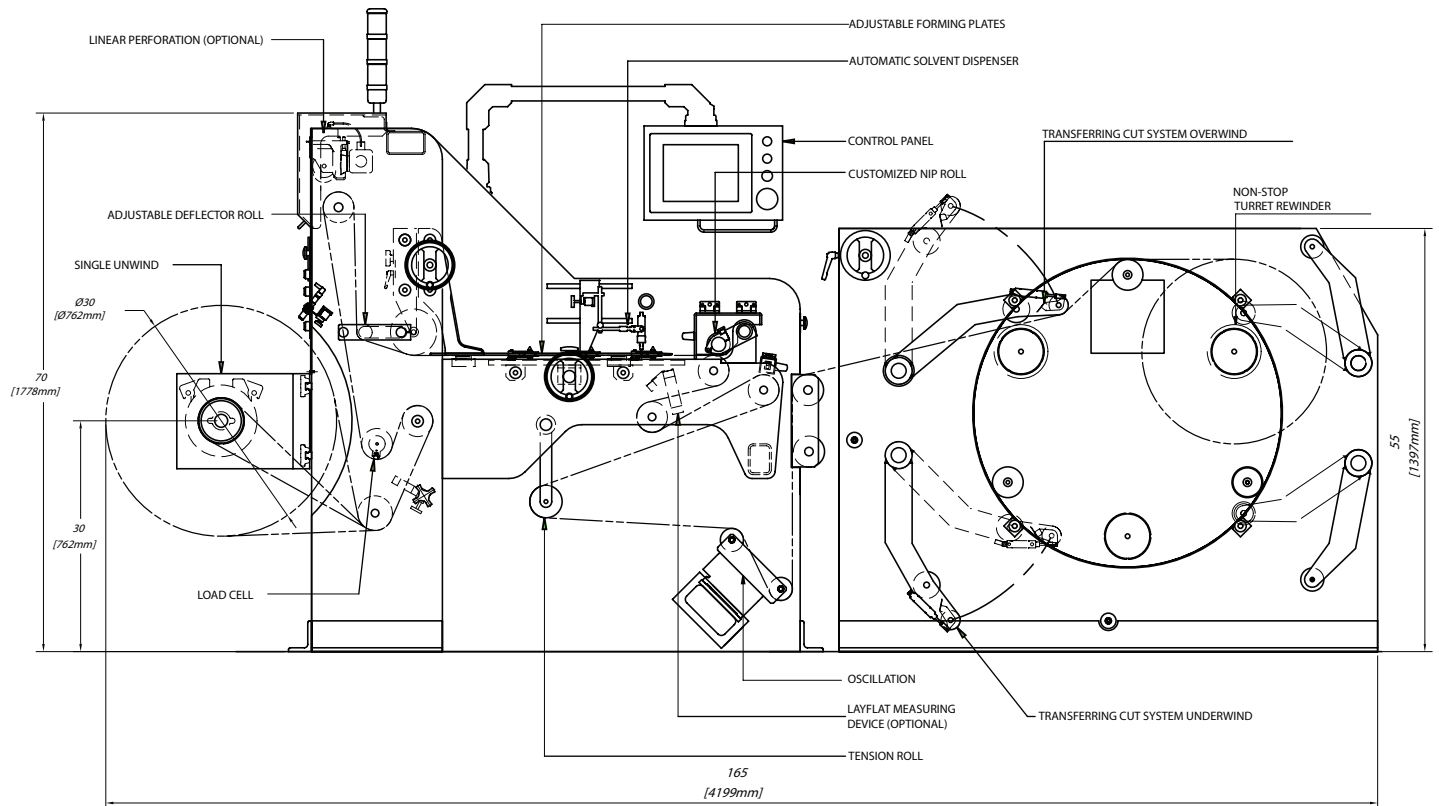
The Stanford Model SM10-T Series of Seammachines offers three levels of continuous operation ranging from single position unwinds through to dual position and non-stop unwinds – all combined with continuous operation rewinds.

Various options for layflat and seam inspection are available as quality control systems.

Accraply's Stanford Seammachine represents a new and higher level of performance for producers of shrink sleeves. With its patent pending processes, increased speed and minimal waste, the Seammachine provides increased efficiency, productivity and ease of operation.



Stanford Sales Office
 1139 South Broadway
 Salem, IL 62881 USA
 +1 (618) 548-2600



Accraply, Inc.

A BARRY-WEHMILLER COMPANY

3580 Holly Lane North, Plymouth, MN 55447-1269 USA • +1 (763) 557-1313
 sales@accraply.com • www.accraply.com