



ShrinkMaster S2000



Features

- Superb shrunk finish with Filled or Cold Containers
- Virtually Dry shrinking
- Fully Insulated & preheated Chassis
- Unique Coaxially piped shrinking nozzels to minimise condensation
- Low running cost. (100 --200 Kgs /Hr Max @ 3 Bar)
- 12 heating areas split into 2 zones for complex shapes
- Simple manual adjustment at both ends for complete control
- Supplied complete with Stainless Steel Prepsit & Extraction
- Can be used in series for higher speed applications

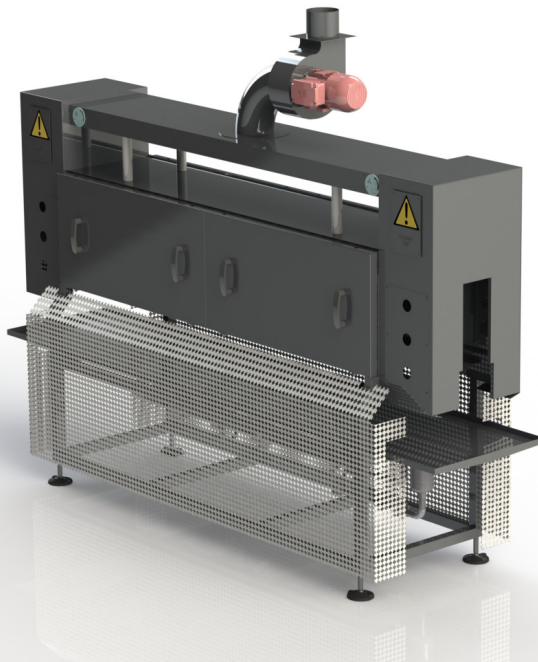
Graham | Sleeveit - ShrinkMaster S2000 Steam Tunnel

The ShrinkMaster S2000 steam shrink sleeve tunnel was designed and developed by Accraply as a result of rapid growth in the use of shrink sleeves, particularly in the form of Sleeve Labels, which highlighted the need for high energy shrinking systems to match the performance of sleeve application machines such as the Sleeveit SleeveMaster SLM & SleeveMaster SLM Plus.

The ShrinkMaster S2000 steam shrink sleeve tunnel is a compact design for simple installations, but it is also able to be fitted in series for high-speed or zoned applications. The ShrinkMaster S2000 steam shrink sleeve tunnel is ideally suited for shrinking sleeves to containers with irregular shapes, those that have heavily 'waisted' sections or those with large changes in shrink rates. It is also highly capable of shrinking PET sleeves to PET bottles and coping with thinner sleeve materials. ShrinkMaster S2000 steam shrink sleeve tunnels have 12 individually adjustable heating areas, split into 2 zones. Steam management systems provide all the elements of steam conservation and safety and the tunnel carcass is heavily insulated.

ShrinkMaster S2000 steam shrink tunnel may be fed from factory steam lines, or Accraply can supply suitable Gas or Electric powered steam generators. ShrinkMaster S2000 heat tunnels are just one of the Accraply range of Sleeve and Label Applicators, Electric and Steam Shrink Systems and container handling devices which form part of the widest range of sleeving systems available in the market.

Specially designed application and shrinking systems from this range of equipment are available to suit almost any customer requirement. Accraply has over 20 years of in-depth experience in the container decoration field.



Tunnel Type:	Dry Steam
Conveyor Height min/max:	900 mm/1000 mm [35.34 inch/39.37 inch]
Container Height min/max:	50 mm/300 mm [1.97 inch/11.81 inch]
Container Diameter min/max:	20 mm/120 mm [.79 inch/4.72 inch]
Pressure:	5 Bar [72.52 PSI]
Steam Requirements:	100 - 200 kg/hr
Electrical:	230 VAC, 1 Phase, 3 Amps
Weight:	350 kg [771.62 lbs]

** All specification and tooling requirements are subject to Accraply evaluation of all label and product samples. Specifications shown reflect standard machine capabilities. Accraply can also meet other specification requirements. Please call for details.*

Accraply

Trine

Stanford

Graham

Sleeveit

Harland

BW Packaging Solutions consist of Accraply, BW Container Systems, Design Group, Paper Converting Machine Company, Pneumatic Scale Angelus, Thiele Technologies and Synerlink. Through their diverse capabilities, these companies can collectively provide everything from a single piece of equipment to fully integrated, tailor-made packaging line solutions for a wide range of industries, including: food and beverage, personal care, container manufacturing, pharmaceutical and medical devices, household products, paper products and textiles, industrial and automotive, and converting, printing and publishing.

BWPackagingSolutions.com

