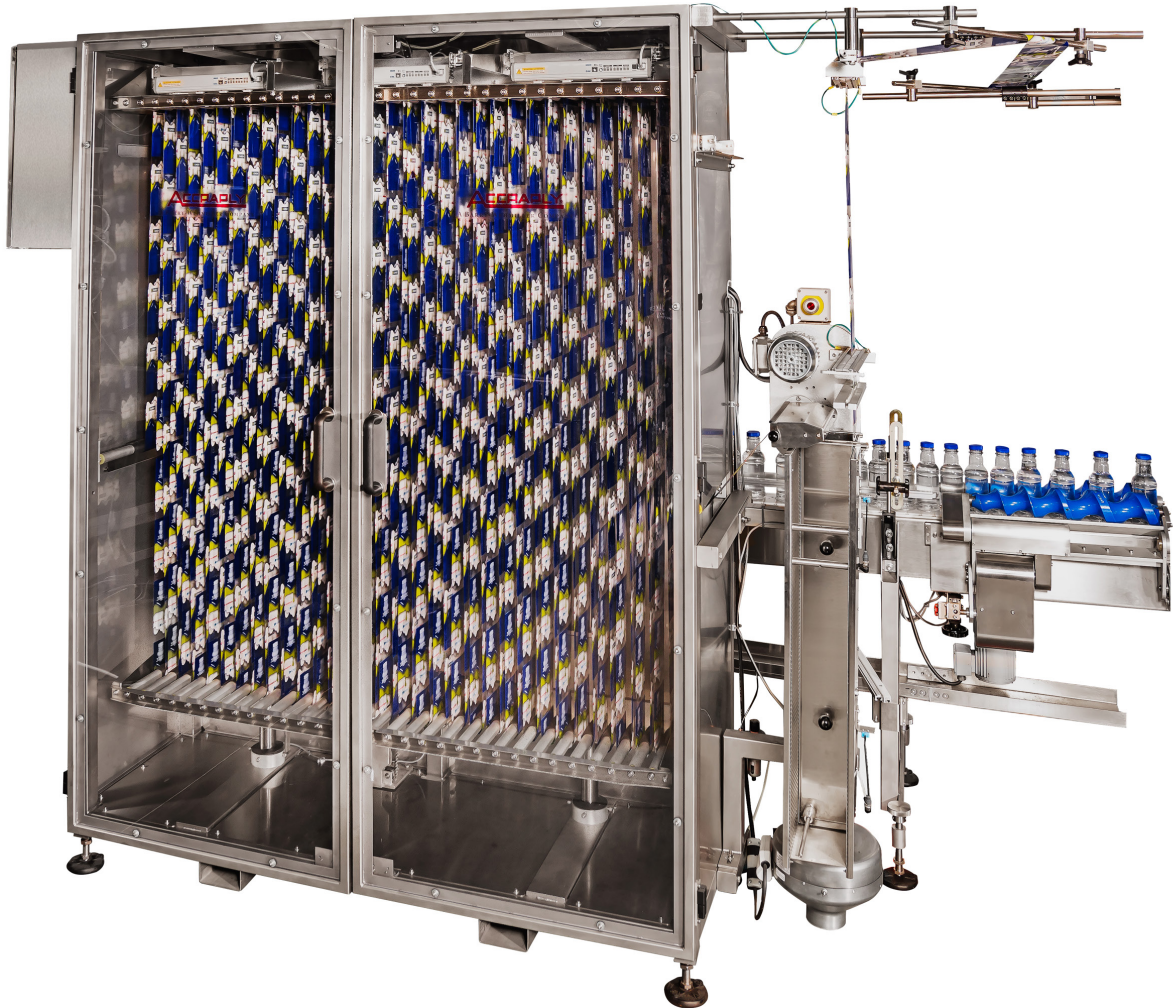


Accumulator



Features

- Suitable for high speed lines
- Designed for nonstop production lines
- Provides the ability to splice on the fly
- Stores either 50 or 100 meters of material

Graham & Sleevit - Shrink Sleeve Accumulator

The Graham & Sleevit Accumulator has been designed for high-speed lines that require non-stop production whenever there is no container accumulation built into the production line.

When combined with a stand-alone Twin Spool Sleeve Unwind System and splice table, the Graham & Sleevit Accumulator gives the operator time to splice a new reel of sleeve material to the end of the old reel, while the sleeve material already in the Accumulator continues to feed into the sleeve applicator. When the splice has been made, the Accumulator will refill automatically.

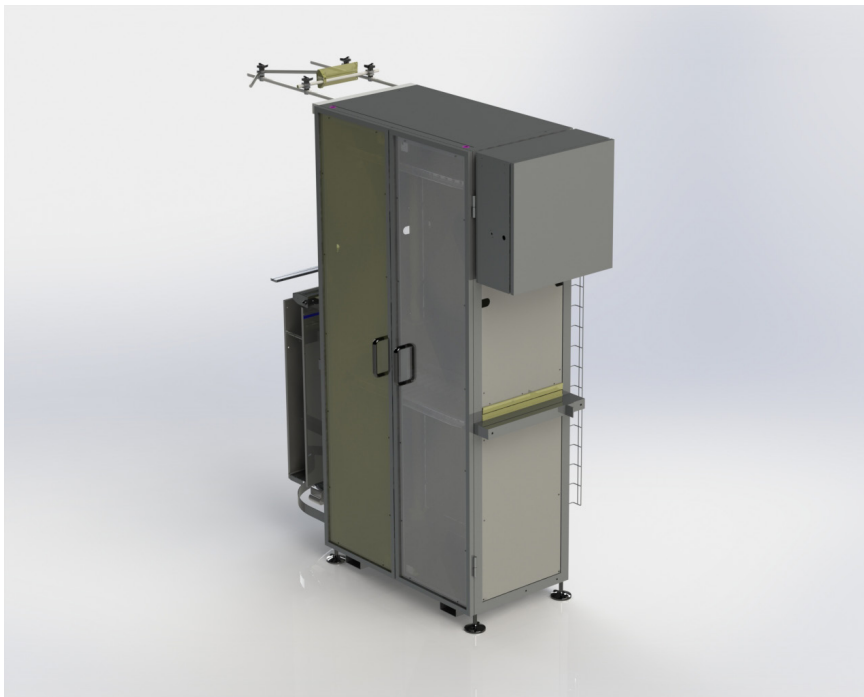
The Graham & Sleevit Accumulator can be supplied to store either 50 or 100 meters of sleeve material, according to customer requirements.

Graham & Sleevit Accumulators are just one of the Accraply range of Sleeve and Label Applicators, Electric and Steam Shrink Systems and Container Handling Devices which form part of the widest range of sleeving system solutions available in the market.

Accraply has over 20 years of in-depth experience in the container decoration field. Accraply provides unrivalled worldwide spares and service back up and customised after care packages.



Electrical:	230VAC
Phase:	1
Current:	1.2 Amps
Capacity:	50 or 100 meters
Weight:	600kg [1,322lbs]



** All specification and tooling requirements are subject to Accraply evaluation of all label and product samples. Specifications shown reflect standard machine capabilities. Accraply can also meet other specification requirements. Please call for details.*

Accraply | Trine | Stanford | Graham & Sleevit | Harland